



Printable wall decals

Transport

Recreate a busy city and it's fast moving streets with these illustrations of cars, buses, planes and buildings.

Printable wall decals

How to print and install

Step 1 - Measure your walls

First off you need to measure how much space you have on your walls and how big you need your artwork to be.

The files we have supplied can scale to any size. So you need to first plan out your wall space, then measure how much space you will have for each of the illustrations. As you need to decide on a size of each of the elements from the artwork.

The wall does need to be clean, dry and smooth, and have been painted for about 1 month.

Step 3 - Contact vinyl supplier

The files containing the artwork can scale to any size. This type of file is called a vector file. You don't really need to know any more than that but some printers may refer to it, so it is a good word to know. The PDF you have downloaded is good enough to send to them to print out for you. You just need to fill in the cover sheet detailing what you require printed, and in what colour. They will do the rest.

You need to find a printer, or sign maker who can produce laser cut vinyl. It sounds impressive but this is quite standard kit.

Send them the files, and what you require and they will do the rest.

We would recommend getting in contact with one of the following companies

Vinyl Impression - vinylimpression.co.uk

Wallboss - wallboss.co.uk

Wallchimp - wallchimp.co.uk

Step 2 - Choose illustrations

From the artwork files select which elements you require from the downloaded file. The file has a cover sheet which you can print out to help select your finished artwork.

Find the illustration, as well as making a note of how many versions of this illustration you require, and the finished printed size.

Top Tip - Print out some test files and cut around them to help you plan your scene.

Step 4 - Install on walls

Clean and dry the target wall. These vinyls will come supplied on white backing paper. Put the design on a table, graphic side up and using a rubber spatula. Rub back and forth across the design. Now flip it over and do the same thing on the other side.

Then you can peel off this backing paper making sure the designs have stuck to the clear plastic sheet which is sticky. If you find some parts still stick to the backing paper, fold the two sheets together and rub some more to transfer on to the clear sheet.

Carefully stick down your design with the sticky side of the clear transfer tape (and the vinyl) facing the destination surface.

Use your spatula to gently rub the design onto the surface, smoothing out any imperfections and pushing out air bubbles.

Then being really careful, slowly pull back the clear plastic to leave the design on the wall. And you are done.

Printable wall decals

Artwork coversheet 1



Road Corner

Number of stickers:
Colour:
Size:



Road Straight

Number of stickers:
Colour:
Size:



Car

Number of stickers:
Colour:
Size:



Police Car

Number of stickers:
Colour:
Size:



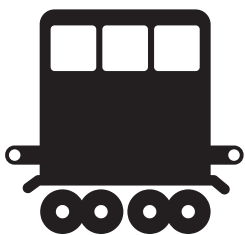
Bike

Number of stickers:
Colour:
Size:



Train Engine

Number of stickers:
Colour:
Size:



Train Carriage

Number of stickers:
Colour:
Size:



Crain

Number of stickers:
Colour:
Size:



Bus

Number of stickers:
Colour:
Size:

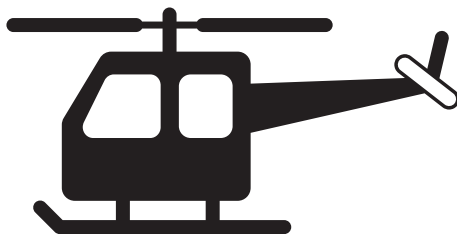
Printable wall decals

Artwork coversheet 2



Fire Engine

Number of stickers:
Colour:
Size:



Helicopter

Number of stickers:
Colour:
Size:



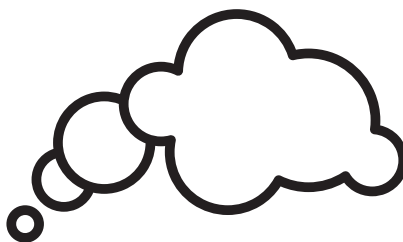
Traffic Light

Number of stickers:
Colour:
Size:



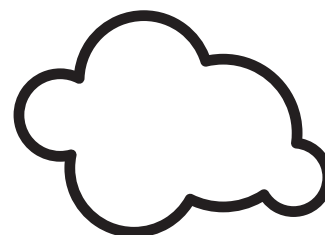
Trees

Number of stickers:
Colour:
Size:



Smoke

Number of stickers:
Colour:
Size:



Exhaust

Number of stickers:
Colour:
Size:



Track

Number of stickers:
Colour:
Size:

Printable wall decals

Artwork files



Printable wall decals

Artwork files



Printable wall decals

Artwork files

